



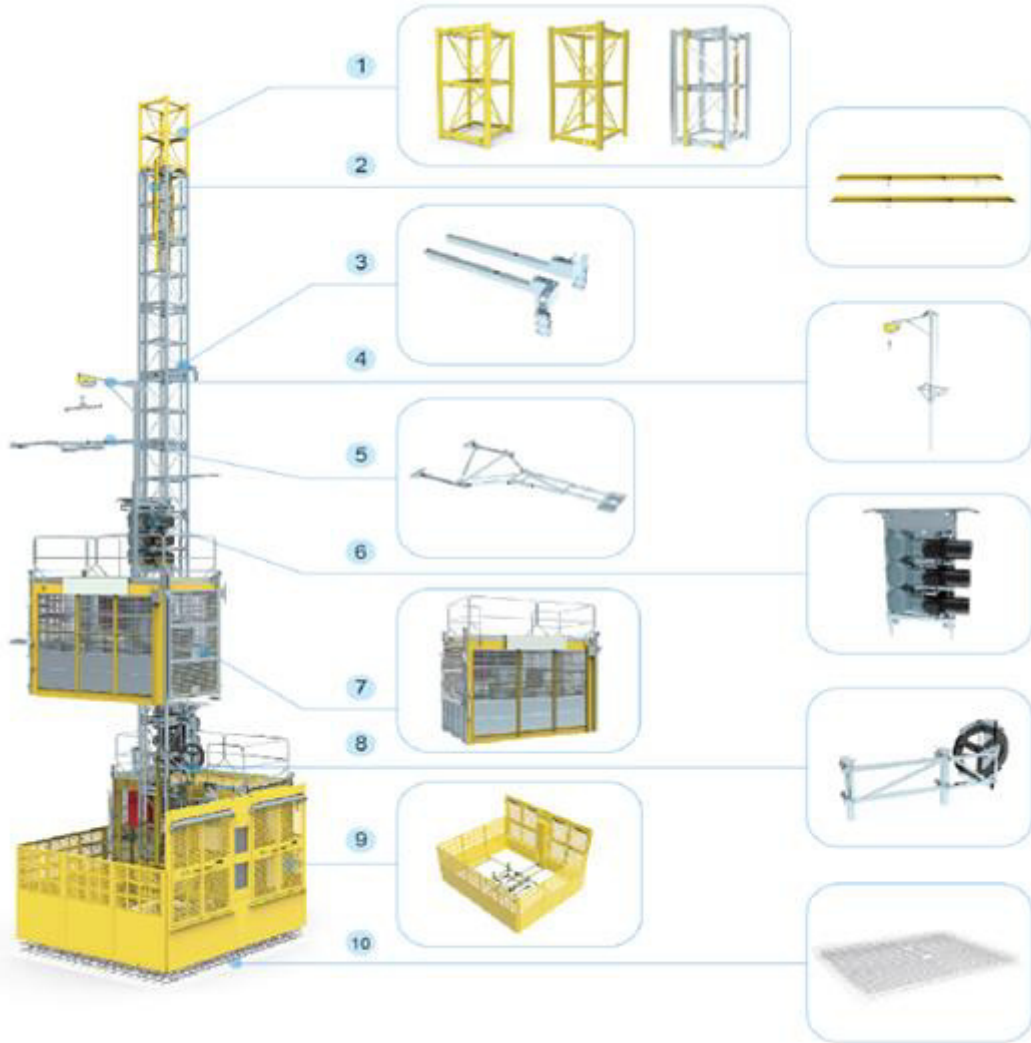
MOTTO
INTERNATIONAL

PASSENGER AND MATERIAL HOIST
ML20



Motto International SDN BHD Reg. Number: 0694888-K, Jalan Pahang 149, 53000 Kuala Lumpur
Malaysia. Phone: +60 340231880. Fax: +60 34023 1890. info@mottointernational.net

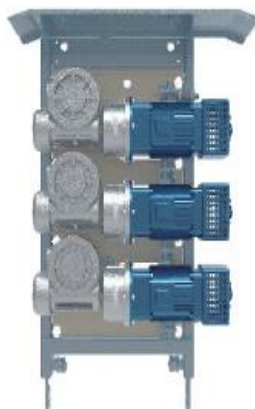
MAIN SPECS



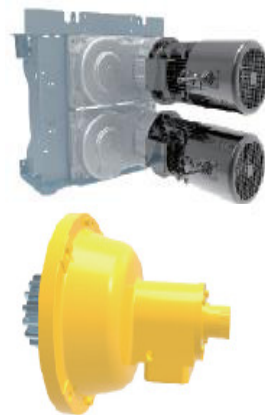
- 1 Different possibility of mast sections 4 Assembly Derrick 7 Single cage or twin cage 10 Concrete foundation
 2 Limit switches stop cams 5 Different wall ties 8 Cable trolley
 3 Different type of cable guides 6 Drive units 9 Ground enclosure



Galvanized 650x650x1508 M8 mast



Different possibilities of drive units



Fall arrest safety device (parachute)



Modular base system

Single cage

Twin cage

Bumpers

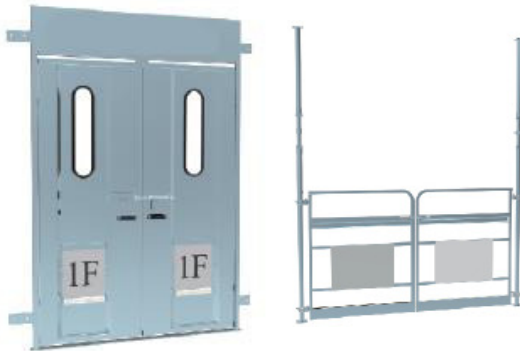
Fully galvanized



Different wall ties available

V type

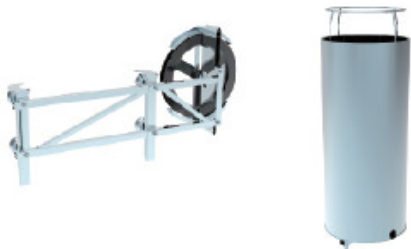
Pipes and clamps



Different Landing gates available

Pipes and clamps type

Full panel type



Different cable systems

Trolley

Drum



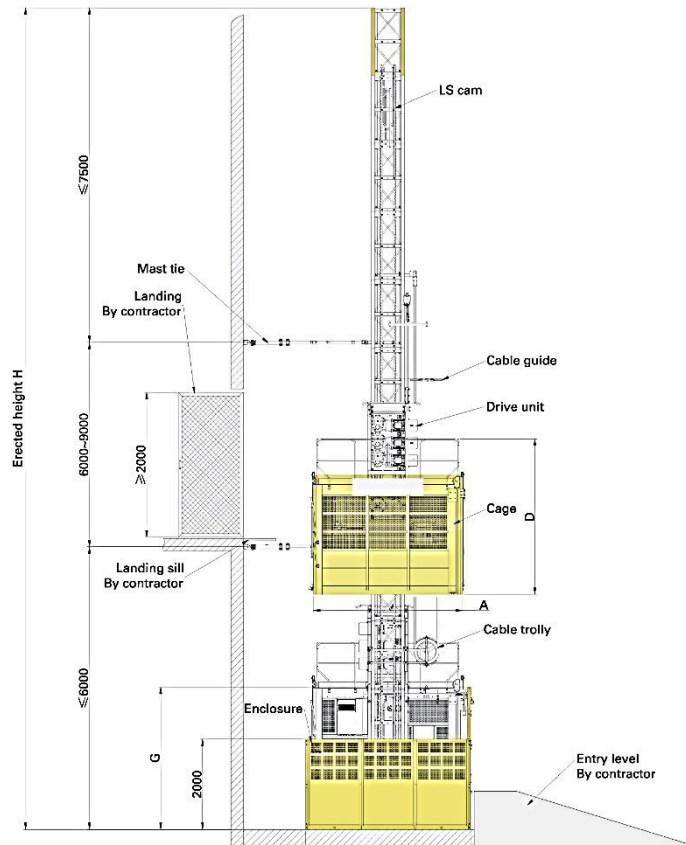
Schneider electric

Inverter

Contactors, breakers, control relays

Main data

Single cage:	3.0x1.5x2.1m
Twin cage:	3.0x1.5x2.1m each
Speed:	0-96m/min according to config.
Load capacity:	2000kg
Treatment:	powder coating/ galvanized
Safety device:	SAJ
Cage weight:	1950 single/3900 twin
Mast section size:	650x650x1508
Rack module:	M8
Base enclosure:	3545x2000
Inverter:	Schneider
Motors:	SEW, NORD
Reducer:	SEW, NORD
Wall ties:	Pipes and clamps standard
Cable guides:	Bracket type
Erection derrick:	Manual
Doors:	entrance sliding, exit sliding



Optional

V type wall ties, straight type, bracket type
 Load sensor
 3 motors drive unit
 Trolley for big heights
 Landing gates

